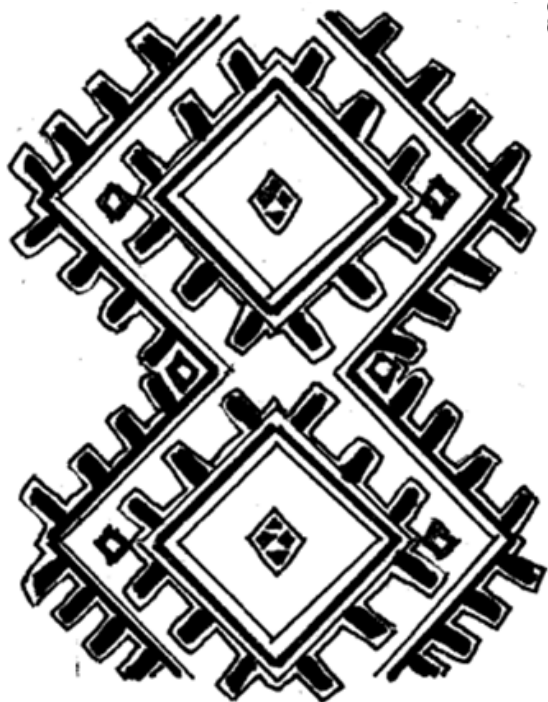
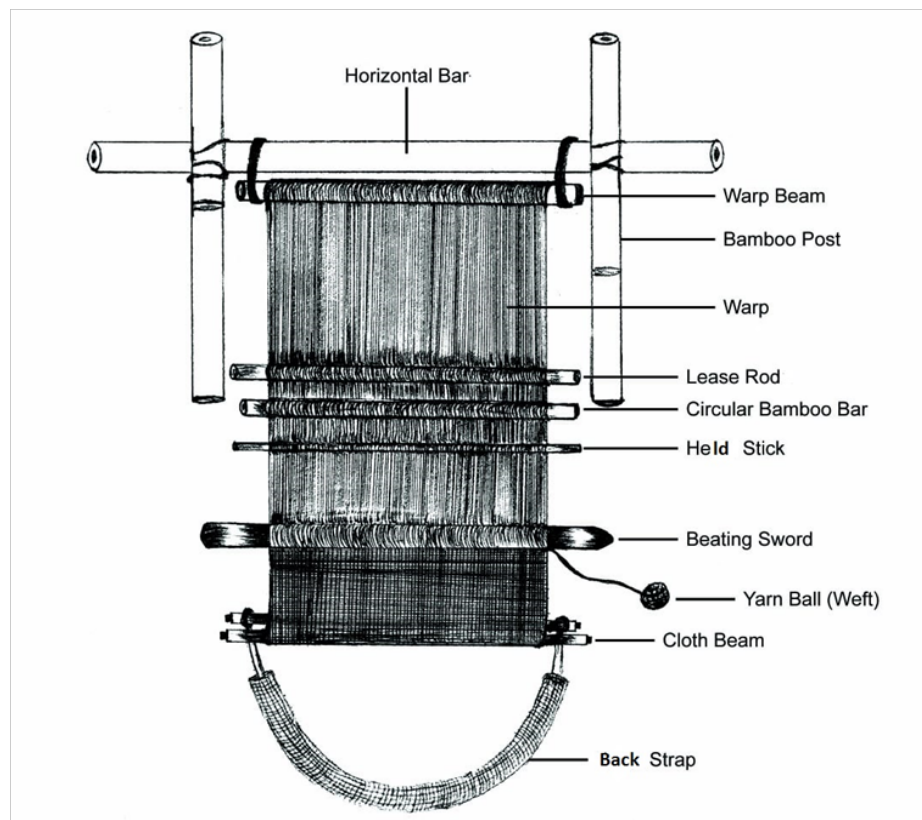


Idu Mishmi Textiles

Photographs and Design Patterns



Traditional Weaving Device and parts



Preparation for Weaving



Picture 1: Preparation for weaving



Picture 2,3 : Ladies Top(Front and Back)

Picture 4: Ladies Bottom Wear



Wrap around: Weaving patterns on loom



Picture 5: Lady weaving Coat

Picture 6: Ladies Bottom Wear



Idu Mishmi women: In Traditional Dress



Picture 7

Idu Mishmi craft in the market



Picture 8

Men's Wear



Picture 9: Men in work wearing Idu Coat (Atomajo/Etokojoh)



Picture 10,11 : Men's Coat(Front and Back)

Men's Wear Types



Picture 12,13 : Etoma Huma (Puhh-prah)



Picture 14,15 : Ana-tubu/Jashi tubu

Men's Wear Types



Picture 16: War Coat called Ana-tubu/Jashitubu



Picture 17: A couple in traditional attire

Accessories



Picture 18, 19, 20 clockwise: Neck tie, Shoulder Bag, Purse

Idu Priest



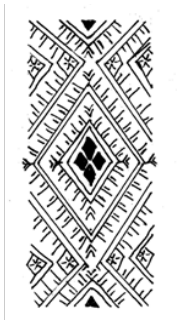
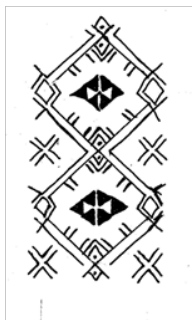
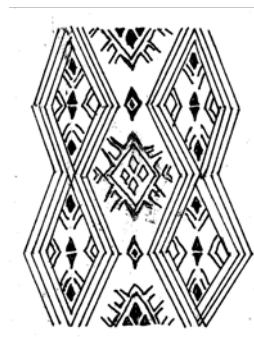
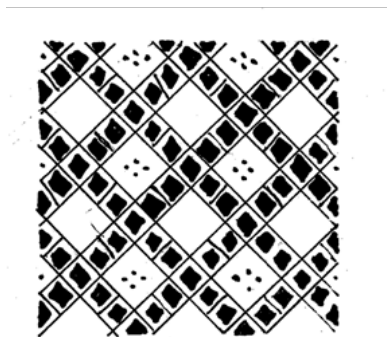
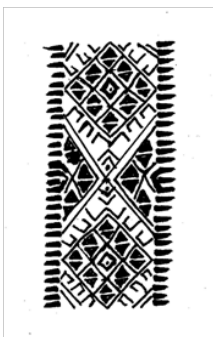
Picture 21

Idu Priest- Dress Design



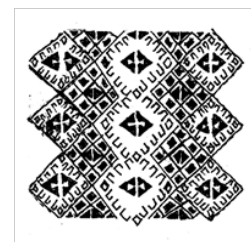
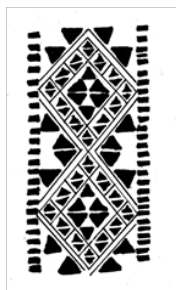
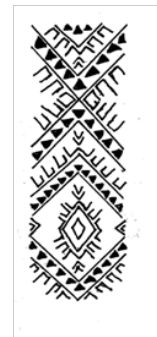
Picture 22, 23: Dress designs in closeup taken from
RIWATCH Museum

Design patterns on Textiles



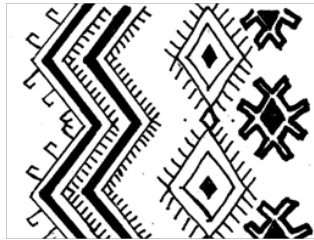
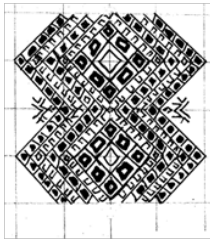
Picture 23, 24, 25, 26, 27, 28

Design patterns on Textiles

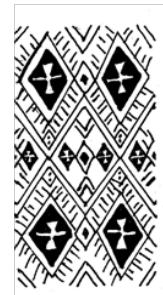
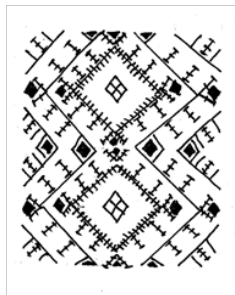
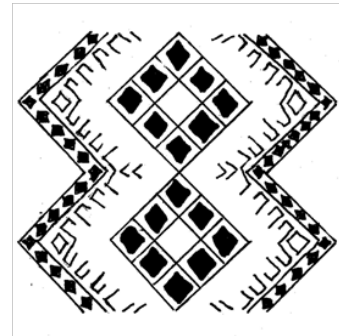
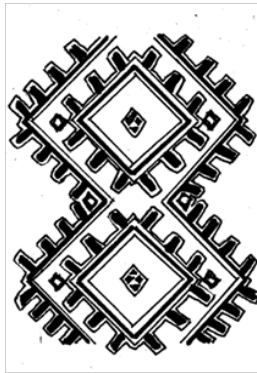
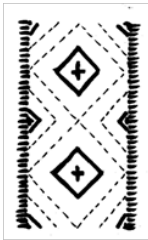


Picture 23, 24, 25, 26, 27, 28

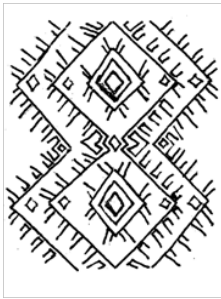
Design patterns on Textiles



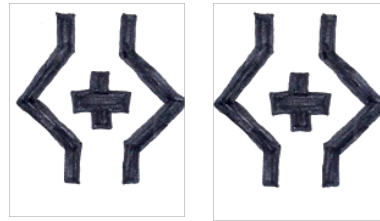
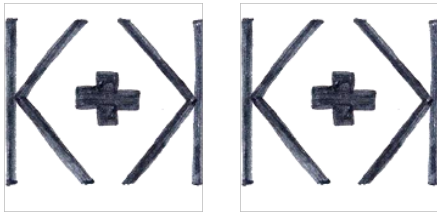
Design patterns on Textiles



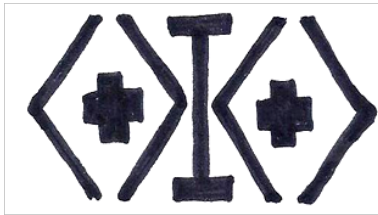
Design patterns on Textiles



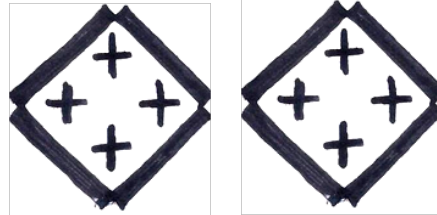
Designs on Idu Mishmi coat



Picture 22: Aphuju loko

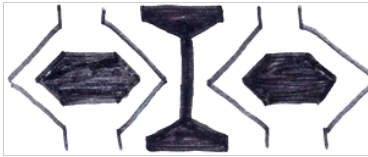


Picture 22: Aphuju-taa

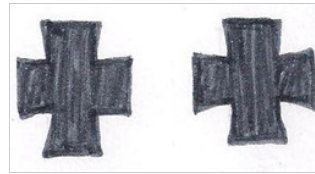


Picture 22: Shumu

Designs on Idu Mishmi coat



Picture 22:



Picture 22: Aaphuju-tubu

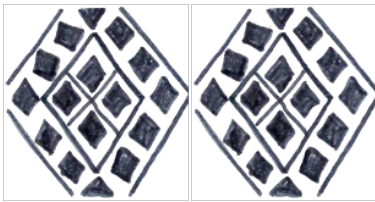


Picture 22: Aaphuju-Nathru

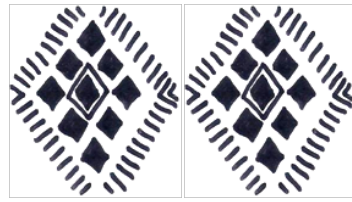


Picture 22: Palitho-loko

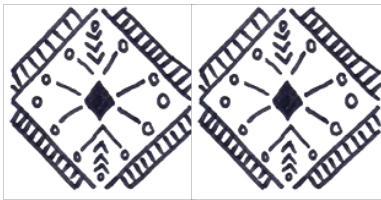
Designs on Idu Mishmi coat



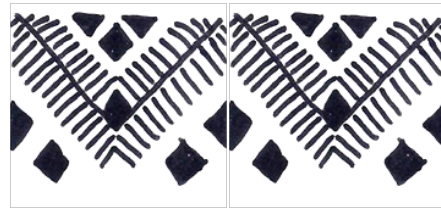
Picture 22:



Picture 22: Palithro

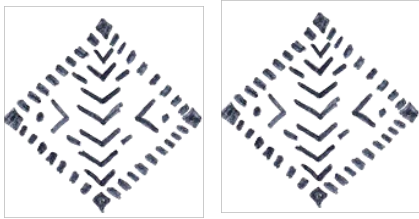


Picture 22: Aeto-thrombo

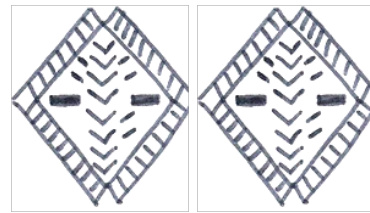


Picture 22: Shu-anjana

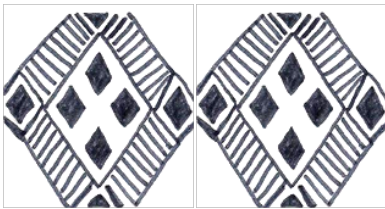
Designs on Idu Mishmi coat



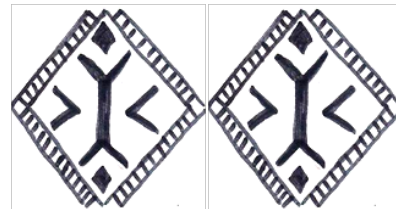
Picture 22:



Picture 22:

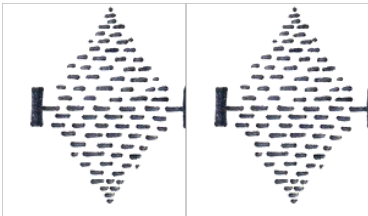


Picture 22: Abijo-rumbro



Picture 22:

Designs on Idu Mishmi coat



Picture 22:



Picture 22: Praa-elombra

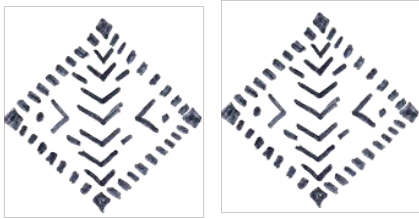


Picture 22: Aaphuju-Nathru

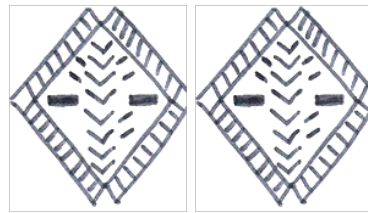


Picture 22: Aabijo

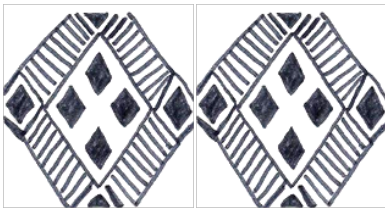
Designs on Idu Mishmi coat



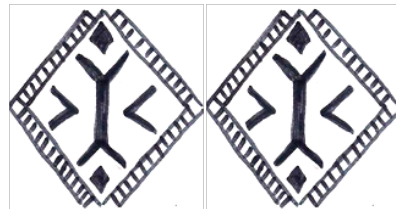
Picture 22:



Picture 22:

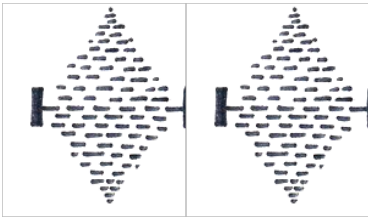


Picture 22: Abijo-rumbro



Picture 22: Praa-elombra

Designs on Idu Mishmi coat



Picture 22: Aaphuju-Nathru



Picture 22: Aabijo

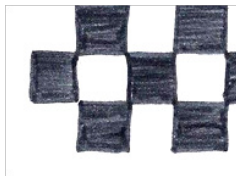


Picture 22: Aaphuju-aabaro

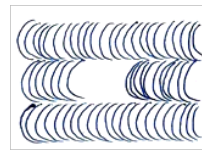


Picture 22: Aakuwa

Designs on Idu Mishmi coat



Picture 22: Aaphuju-Aatu-tu



Picture 22: Aambushu



Picture 22: Aambo

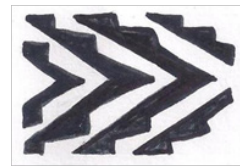


Picture 22: Maalejo

Designs on Idu Mishmi coat



Picture 22: Aaphuju-Nathru



Picture 22: Aaphuju-Aata-
pra